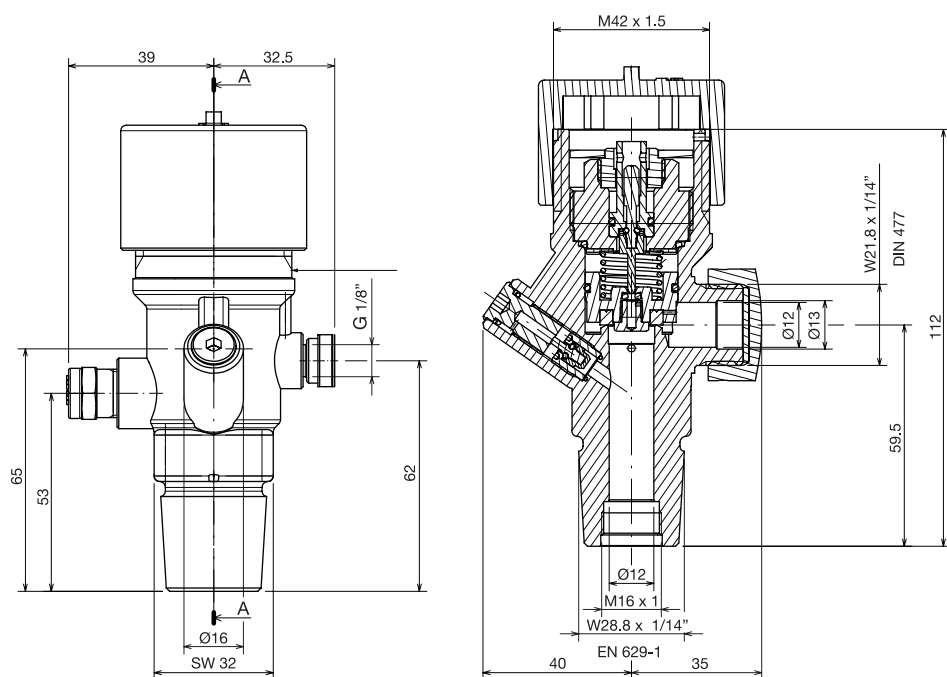


# VALVES FOR INERT GAS CYLINDERS

**NAFFCOInert®** cylinder head valve shall be pressure seat type valve. The head valve is available in two different working pressure 200 Bar / 300 Bar to meet the suitable system requirement.

The head valve can be operated by electric actuator, pneumatic actuator or pneumatic / manual actuator. The head valve is equipped with pressure gauge / pressure switch to monitor the cylinder pressure.



## SPECIFICATION

Model No.	B04801218-NF	B04802020-NF
Operating Pressure @ 15°	200 Bar	300 Bar
Test Pressure	300 Bar	450 Bar
Material	Brass	
Discharge Port	W21.8 x 1/14"	
Connection for Release Device	M42 x 1.5	
Port for Pilot Hose	G 1/8"	
Monitoring Port	M10 x 1	
Orifice Size	Ø12mm	
Temperature	-20°C to 50°C	
Flow Rate	Kv= 2.66; Cv= 3.09	



**NAFFCO**  
 Email: [info@naffco.com](mailto:info@naffco.com)  
[www.naffco.com](http://www.naffco.com)

In line with NAFFCO policy for continuous product development, NAFFCO has the right to change specifications without prior notice.