

BRACKETS

DESCRIPTION

NAFFCO supplies the cylinder fixing brackets together with equipment. There are two types of brackets:

- Wall fixed brackets.
- Brackets appropriate for modular cylinders.

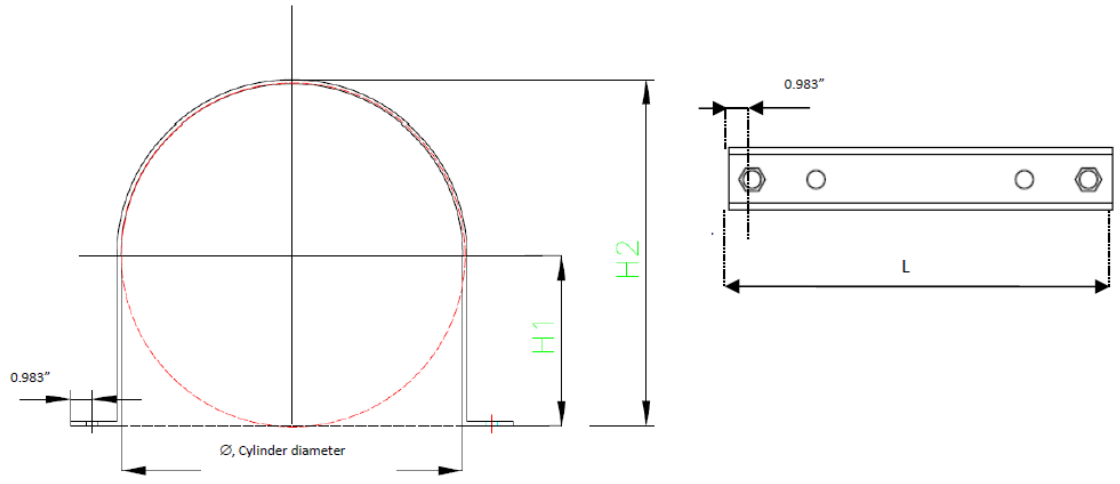
With each of these types there are different models, which comply with use requirements of system

supplied. This manual describes the characteristics of each of the types however the specifics of mounting are determined by each individual installation.

Cylinder Bracket Material shall be Carbon Steel C15 (EN 10277).

SEAMLESS CYLINDER BRACKETS

Bracket for modular seamless cylinders with capacity: 12, 33, 67, 100, 170, 190, 250, and 300 lb.

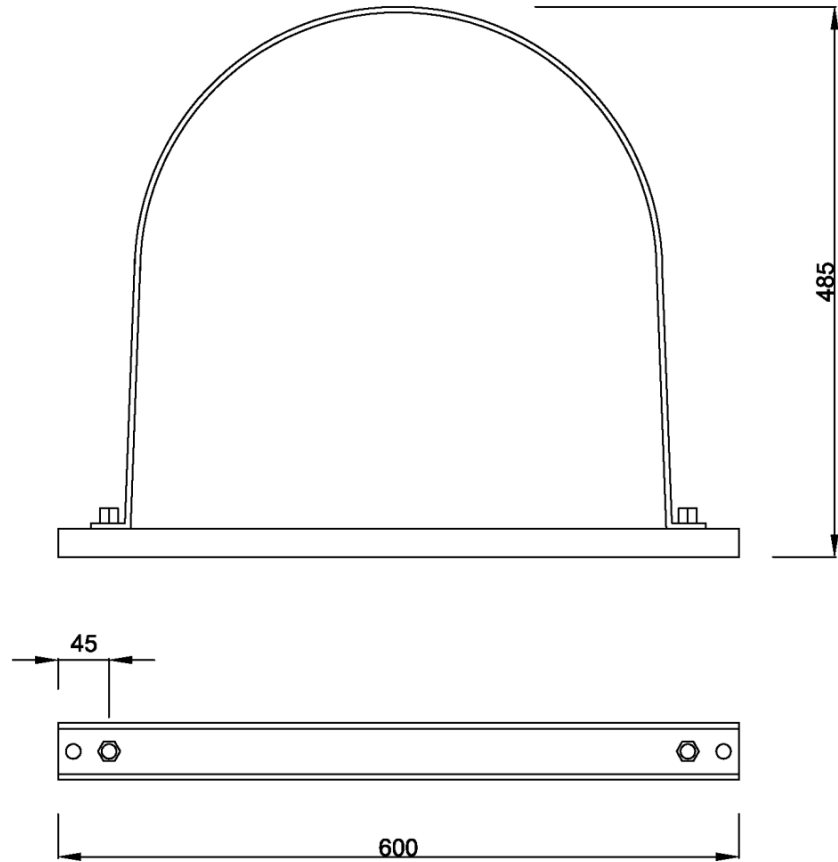


Bracket Model No.	Cylinder Capacity, Lb	Ømax, In	H1, In	H2, In	L, In
NF BR 12/331C	12	5.512	4.331	5.904	8.464
NF BR 12/331C	33	5.512	4.331	5.904	8.464
NF BR 67/1001C	67	10.00	4.920	9.449	12.991
NF BR 67/1001C	100	10.00	4.920	9.449	12.991
NF BR 170/1901C	170	10.59	5.315	10.630	14.370
NF BR 170/1901C	190	14.00	5.315	10.630	14.370
NF BR 250/3001C	250	13.857	6.298	13.386	17.321
NF BR 250/3001C	300	13.857	6.298	13.386	17.321

©
NAFFCO

WELDED CYLINDER BRACKETS

Bracket for modular seamless cylinders with capacity: 67, 100, 190, 300, 430, and 590 lb.



Bracket Model No.	Cylinder Capacity, Lb	Ømax, In	H1, In	H2, In	L, In
NF BR 12/331C	67	17.7	1.77	19	23.6
NF BR 12/331C	100	17.7	1.77	19	23.6
NF BR 67/1001C	190	17.7	1.77	19	23.6
NF BR 67/1001C	300	17.7	1.77	19	23.6
NF BR 170/1901C	430	17.7	1.77	19	23.6
NF BR 170/1901C	590	17.7	1.77	19	23.6



NAFFCO FZCO
 World Headquarters

Dubai, United Arab Emirates
 info@naffco.com | naffco.com

We reserve the right to modify specifications without prior notice