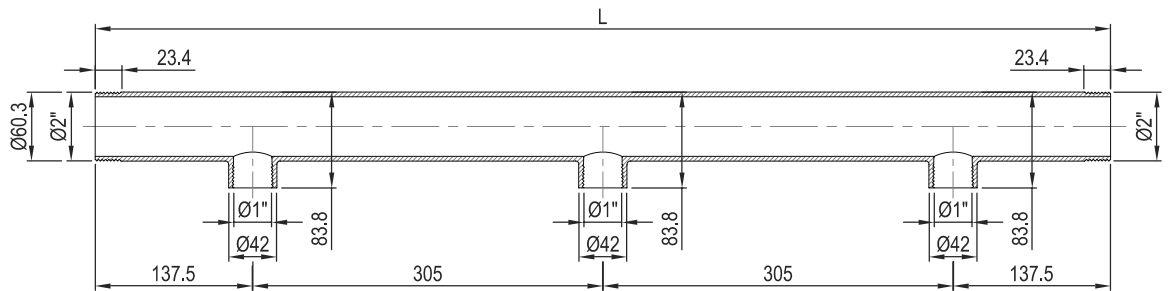


# MANIFOLDS

Manifolds are used to connect several cylinders at 100 bar pressure. They can only be used with valves with pressure regulators.

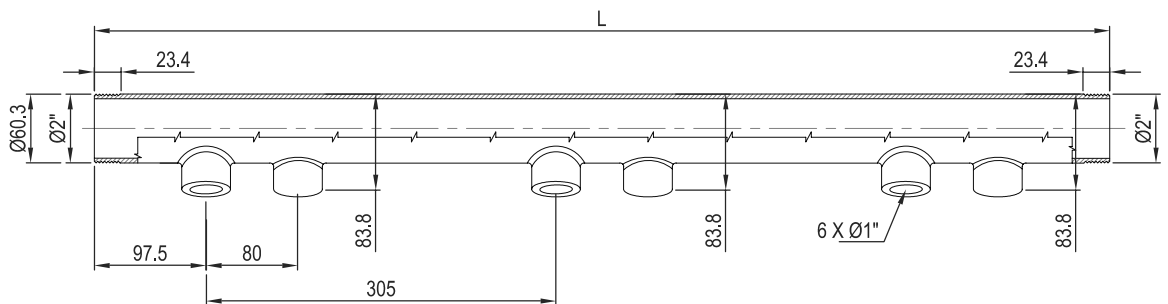
## SINGLE ROW ARRANGEMENTS



### SPECIFICATION

Model No.	B05822013-NF	B05822014-NF	B05822015-NF
Connection for	2 Cylinders	3 Cylinders	5 Cylinders
Working Pressure	100 Bar		
Test Pressure	150 Bar		
Length	580 mm	885 mm	1495 mm
Inlet Connection	Rc1"		
Outlet Connection	R2"		
Material	Galvanized Steel		

## DOUBLE ROW ARRANGEMENTS



### SPECIFICATION

Model No.	B05822016-NF	B05822017-NF	B05822018-NF
Connection for	4 Cylinders	6 Cylinders	10 Cylinders
Working Pressure	100 Bar		
Test Pressure	150 Bar		
Length	580 mm	885 mm	1495 mm
Inlet Connection	Rc1"		
Outlet Connection	R2"		
Material	Galvanized Steel		

### MANIFOLD CONNECTOR

The manifold connector is used to connect several manifolds. The red dot confirms testing up to 300 bar.



### SPECIFICATION

<b>Model No.</b>	<b>026300500-NF</b>
Working Pressure	100 Bar
Test Pressure	300 Bar
Connection	R2"
Material	Galvanized Steel

### MANIFOLD END CAPS

Manifold End-Caps is used to close the end of manifold it is available with and without port for relief valve.

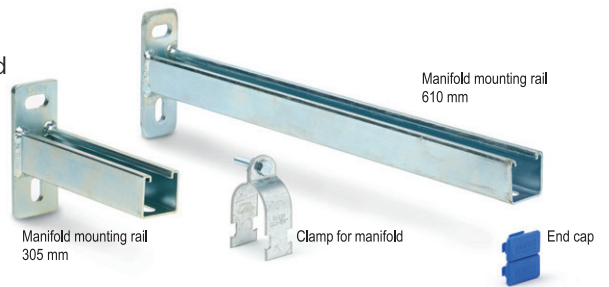


### SPECIFICATION

<b>Model No.</b>	<b>B023400100-NF</b>	<b>B026300501-NF</b>
Working Pressure	100 Bar	
Test Pressure	300 Bar	
Cap Connection	R2"	R2" to 1"
Material	Galvanized Steel	

### MANIFOLD MOUNTING PARTS

Galvanised steel wall mounting rails and clamps are used to mount the manifold.



### SPECIFICATION

Part	Model No.	Length	Diameter
Manifold Mounting Rail	B05805000-NF	305 mm	
	B05805001-NF	610 mm	
Clamp for Manifold	B05805004-NF		2"
End Cap	024900322-NF		



**NAFFCO**  
 Email: [info@naffco.com](mailto:info@naffco.com)  
[www.naffco.com](http://www.naffco.com)

In line with NAFFCO policy for continuous product development, NAFFCO has the right to change specifications without prior notice.